

510575 Kulp Gen Pronto **DALLY** -ET

NEW Price **\$28** ^{cost}

IB/MACE-USA 1/10

DTR	HRD	PTAM	%F	FAT	%P	PRO	REL	PL	SCC
134	104	232	0.01	12	0.04	19	87	3.8	3.00

IB/MACE-USA 1/10

DTR	HRD	PTAT	REL
71	63	0.80	67

gender
SELECTED

Price **\$85** ^{cost}

PRODUCTIVE LIFE



Wessel Dally #6427

- Combines a deep cow family with good type
- High productive life at +3.8
- Pronto son with an exceptional maternal line
- Positive components

PHYSICAL TRAIT EVALUATION

Source: IB/MACEUSA 01/10

71 dtrs.
63 herds

Trait	Short	Long	Value	Target
Stature	Short	Long	0.60	Tall
Strength	Frail	Strong	1.10	Strong
Dairy Form	Tight Ribbed	Open Ribbed	-0.60	Open Ribbed
Rump (side view)	High Pins	Sloped	-1.00	Sloped
Rump Width	Narrow	Wide	0.80	Wide
Rear Leg (side view)	Posty	Sickled	-0.10	Sickled
Rear Leg (rear view)	Hock-in	Straight	0.00	Straight
Foot Angle	Low Angle	Steep Angle	1.10	Steep Angle
Fore Udder	Loose	Strong	1.50	Strong
Rear Udder Height	Low	High	0.80	High
Rear Udder Width	Narrow	Wide	-0.10	Wide
Udder Cleft	Weak	Strong	1.10	Strong
Udder Depth	Deep	Shallow	1.00	Shallow
Front Teat Placement	Wide	Close	0.40	Close
Teat Length	Short	Long	-0.30	Long

Sire: Sun-Made GAR BRO Pronto-ET*TM
Dam: Kulp-Gen EM Daffodil-ET, EX 91
MGS: Lyndale Emory Emerald-ET

504576 Triangle Acres PO **PAYOFF** -ET

Price **\$18** ^{cost}

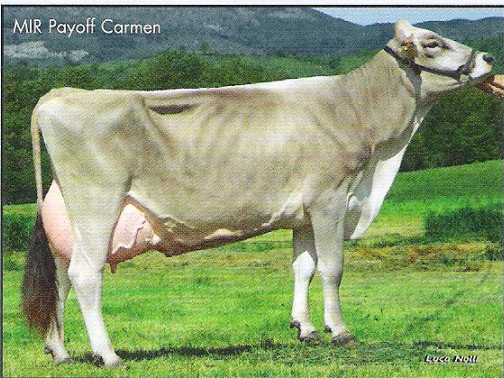
IB/MACE-USA 1/10

DTR	HRD	PTAM	%F	FAT	%P	PRO	REL	PL	SCC
3056	1898	714	-0.05	18	0.03	30	98	-0.6	2.92

USDA/BSCBA Genomic Type 01/10

DTR	HRD	PTAT	REL
1964	1295	0.40	96

DAIRYNESS



MIR Payoff Carmen

- Productive, profitable sire
- High milk volume

Sire: Beta Vue Emory Prelude-ET
Dam: Triangle Acres Coll Polly, EX 92
MGS: R Hart BC Collection

PHYSICAL TRAIT EVALUATION

Source: BSCBA Genomic Type 01/10

1964 dtrs.
1295 herds

Trait	Short	Long	Value	Target
Stature	Short	Long	1.30	Tall
Strength	Frail	Strong	0.10	Strong
Dairy Form	Tight Ribbed	Open Ribbed	0.70	Open Ribbed
Rump (side view)	High Pins	Sloped	0.30	Sloped
Rump Width	Narrow	Wide	0.20	Wide
Rear Leg (side view)	Posty	Sickled	-0.30	Sickled
Rear Leg (rear view)	Hock-in	Straight	0.70	Straight
Foot Angle	Low Angle	Steep Angle	0.50	Steep Angle
Fore Udder	Loose	Strong	-0.50	Strong
Rear Udder Height	Low	High	0.40	High
Rear Udder Width	Narrow	Wide	1.10	Wide
Udder Cleft	Weak	Strong	-0.50	Strong
Udder Depth	Deep	Shallow	-0.60	Shallow
Front Teat Placement	Wide	Close	0.10	Close
Teat Length	Short	Long	0.20	Long

507573 Blessing Banker **AGENDA** -ET

Price **\$22** ^{cost}

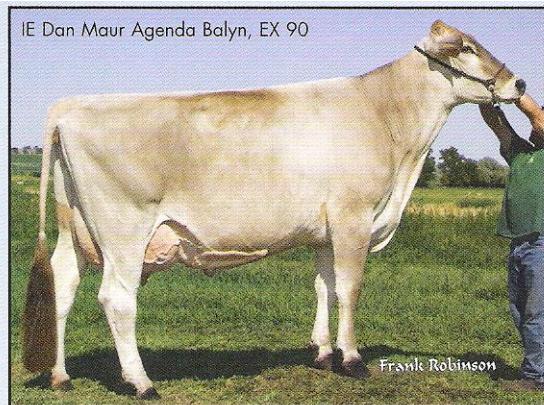
IB/MACE-USA 1/10

DTR	HRD	PTAM	%F	FAT	%P	PRO	REL	PL	SCC
277	195	-370	0.15	18	0.06	0	95	3.5	2.85

USDA/BSCBA Genomic Type 01/10

DTR	HRD	PTAT	REL
146	111	0.70	90

COMPLETE SIRE



IE Dan Maur Agenda Balyn, EX 90

- Prize winning daughters
- High Productive Life
- Combines type & production

Sire: Blessing Aytola Banker
Dam: Blessing Prophet Ashton*TW, EX 91
MGS: Top Acres Dotson Prophet-ET, EX 91

**WORLD-WIDE SIRES
NEW ZEALAND**

Web: www.wwsiresnz.co.nz
 Email: wwsiresnz@clear.net.nz
 Free Phone: 0800 60 70 70